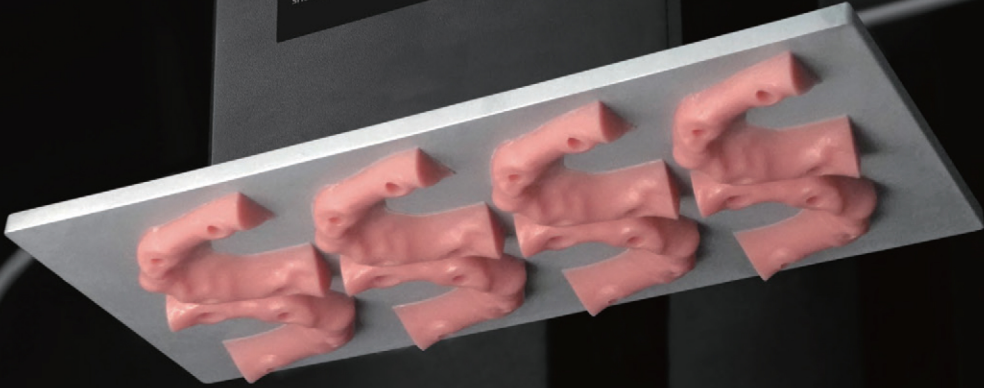


Every time before printing,
Make sure that the build plate is
clockwise-locked.
When the build plate is lightened,
The blue mark on the knob should
show up in front of you.



Soft Pink Resin

For Gingival Masks

Perfect for gingival masks, convenient, removable, and functional.
Looks natural, like human gum.



● Pink Net Weight: 1 kg

Benefits

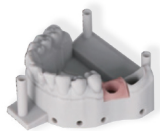
- ✔ Low Shrinkage
- ✔ Flexible
- ✔ Accurate

Applications

- U Gingiva

ROI

Amount: 0.7 g/set
1000 printed model with a
bottle of 1KG



Viscosity

Lower viscosity values indicate that the resin is easier to mix.

500 mPa·s (25°C)

Elongation

362 %

Ultimate Tensile Strength

3.2 MPa